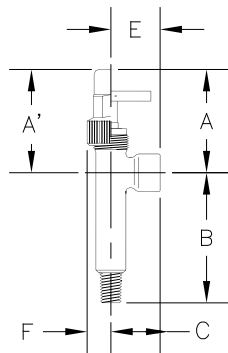
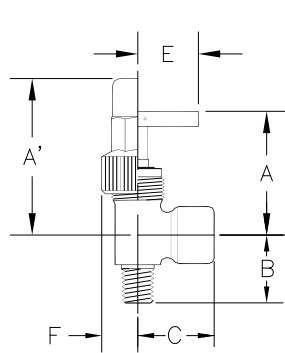


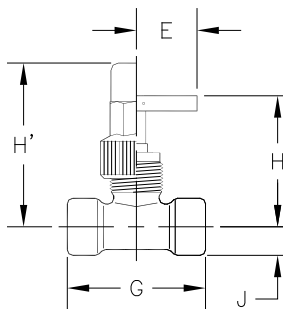
INSTALLATION DIMENSIONS (inches)



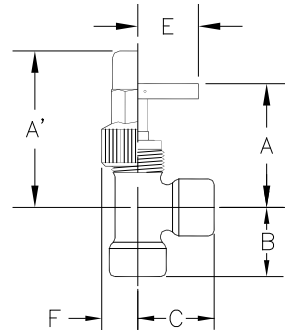
MPT x FPT, LONG NECK



MPT X FPT, ANGLE



FPT X FPT, GLOBE

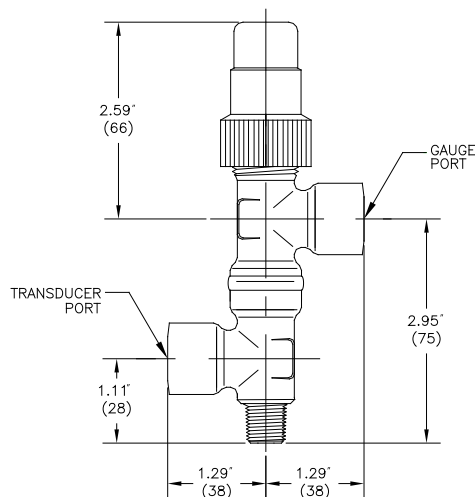


FPT X FPT, ANGLE

SIZE (mm)	A	A'	B	C	E	F	G	H	H'	J
1/4" (7)	2.09 (53)	2.57 (65)	1.11* (28)	1.26 (32)	1.00 (25)	0.59 (15)	2.28 (58)	2.22 (56)	2.71 (69)	0.47 (12)
3/8" (10)	2.94 (75)	3.57 (91)	1.44 (37)	1.88 (48)	1.63 (41)	0.72 (18)	3.22 (82)	3.07 (78)	3.70 (94)	0.59 (15)
1/2" (13)	2.94 (75)	3.57 (91)	1.44 (37)	1.88 (48)	1.63 (41)	0.72 (18)	-	-	-	-

*THE B DIMENSION FOR HGV1, HGV1H, & HGV2 IS 3.25" (83MM)

TRANSDUCER VALVE



1/4" Transducer Valve

The H9490 Transducer Valve can be installed wherever pressure monitoring is desired. Turn stem all the way in (clockwise) and seat to isolate pressure from both gauge and transducer ports. Turn stem all the way out (counter-clockwise) and seat to isolate pressure from the gauge port. With stem in middle position, both ports are active.

ORDERING INFORMATION

DESCRIPTION	SEAL CAP	BAR HANDLE	BARE STEM
1/4" MPT x FPT, Angle, Long Neck†	HGV1*	HGV1H	HGV2
1/4" MPT x FPT, Angle	H7771*	H7771H	H965
1/4" FPT x FPT, Angle	H7772	H7772H	H967
1/4" FPT x FPT, Globe	H957C	H957H	H957
1/4" MPT x FPT x FPT, Transducer Valve	H9490	-	-
3/8" MPT x FPT, Angle	H7773	H7773H	-
3/8" FPT x FPT, Angle	H7774	H7774H	-
3/8" FPT x FPT, Globe	H958C	H958H	-
1/2" MPT x 3/8" FPT, Angle	H7777	-	-
1/2" MPT x 1/4" FPT Angle	H7778	-	-

†LONG NECK VALVES PROVIDE ADDITIONAL LENGTH FOR INSULATION AND PRESSURE GAUGE TURNING CLEARANCE.

*HGV1 AND H7771, AVAILABLE AS WELDED INLET VERSIONS, HGV1W AND H7771W PAINTED BODY.

TO ORDER: Specify Catalog Number.

SERVICE AND MAINTENANCE

Hansen gauge valves require practically no service or maintenance due to the combination of polished stainless steel stem and reliable O-ring stem seal plus graphite composite packing. However, if tightening is ever needed, use a 3/8" open end wrench or an 8" adjustable wrench. Extrusion of some black graphite packing material along the stem is normal.

If the O-ring or the adjustable packing ever needs replacement as evidenced by refrigerant or oil leakage at the stem, isolate valve from the system and evacuate to zero pressure in accordance with appropriate practices.

Seal caps [1/4" (P/N 50-1071), 3/8"-1/2" (P/N 50-1036)] or bar handles [1/4" (P/N 50-1069), 3/8" (P/N 50-1075)] can be easily retro-fitted to valves in the field. All bodies have seal cap threads; simply screw seal cap with O-ring onto these threads. Bar handle kit comes with pin partially installed in handle. Place handle on stem and turn clockwise to close valve. Begin to push pin through handle and valve stem using pliers, then tap with hammer to finish.

CAUTION

Hansen valves are for refrigeration systems only. Read these instructions completely before selecting, using, or servicing these valves. Only knowledgeable, trained refrigeration technicians should install, operate, or service these valves. Stated temperature and pressure limits should not be exceeded. Bonnets should not be removed from valves unless the system has been evacuated to zero pressure. See also Safety Precautions in the current List Price Schedule and the Safety Precautions Sheet supplied with the product.

WARRANTY

Hansen valves are guaranteed against defective materials or workmanship for one year F.O.B. our factory. No consequential damages or field labor is included.

H HANSEN

Hansen Technologies Corporation

400 Quadrangle Drive, Suite F

Bolingbrook, Illinois 60440 USA

Tel: 630.325.1565 Fax: 630.325.1572 Toll: 866.4HANSEN

Email: sales@hantech.com Web: www.hantech.com

USA • Asia • Europe • India • Latin America • Middle East

© 2013 Hansen Technologies Corporation